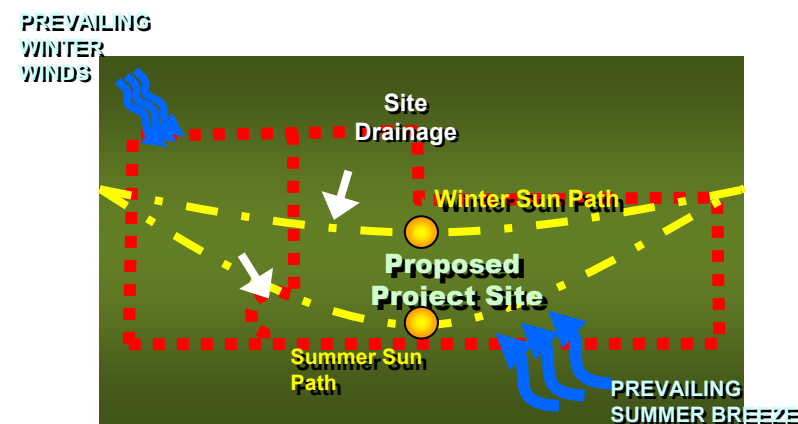




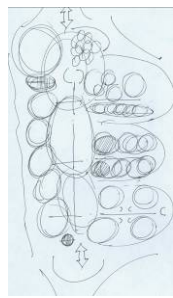
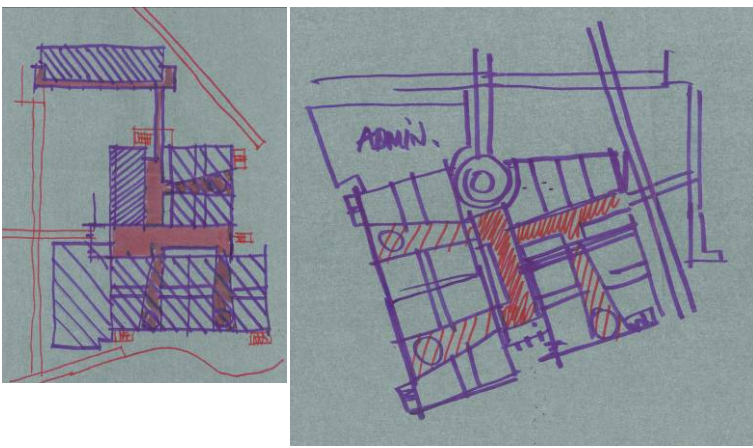
# C.T. HSU + ASSOCIATES, P.A.



- **BUILT PEDAGOGY**  
C. T. HSU HAS BEEN FORTUNATE DURING OUR 23 YEARS OF PRACTICE TO HAVE BEEN INVOLVED IN SUCCESSFUL PROJECTS ON FOUR CONTINENTS
- WE WORK WITH SOME OF THE BEST CONSULTANTS AND CLIENT GROUPS, WHO SHARE OUR COMMITMENT TO GOOD DESIGN  
EVERY PROJECT BEGINS WITH AN EVALUATION OF SITE AND CONTEXT , ESPECIALLY INFILL WORK  
WE CAN WORK CLOSELY WITH YOUR STAFF AND OTHER MAJOR STAKEHOLDERS TO WORK TOWARD CONSENSUS BUILDING THROUGHOUT  
WE FIRMLY BELIEVE OUR LABORATORY AND EDUCATIONAL PROJECTS, COMBINED WITH URBAN AND MASTER PLANNING EXPERIENCE WILL HELP THE PROJECT ACHIEVE A HIGH LEVEL OF SUCCESS.  
NO PROJECT IS TOO BIG OR TOO SMALL, WE FEEL THEY ARE ALL IMPORTANT!





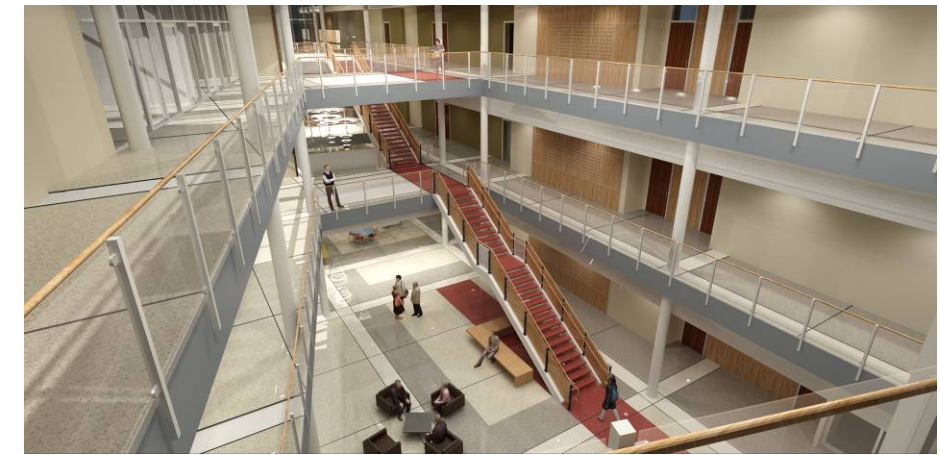
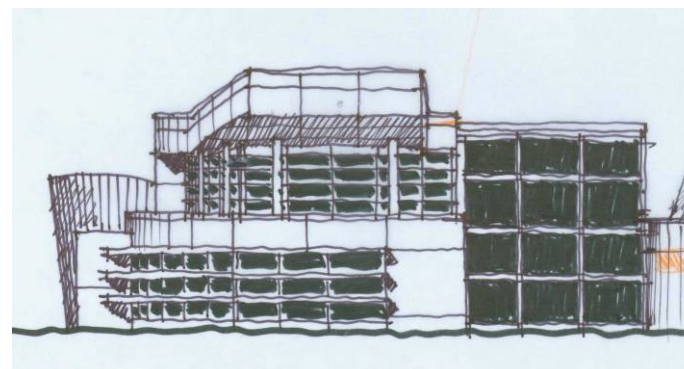
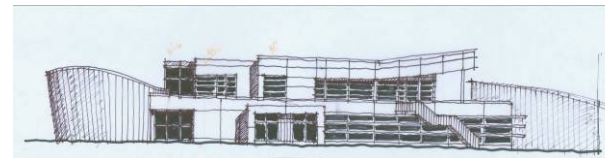
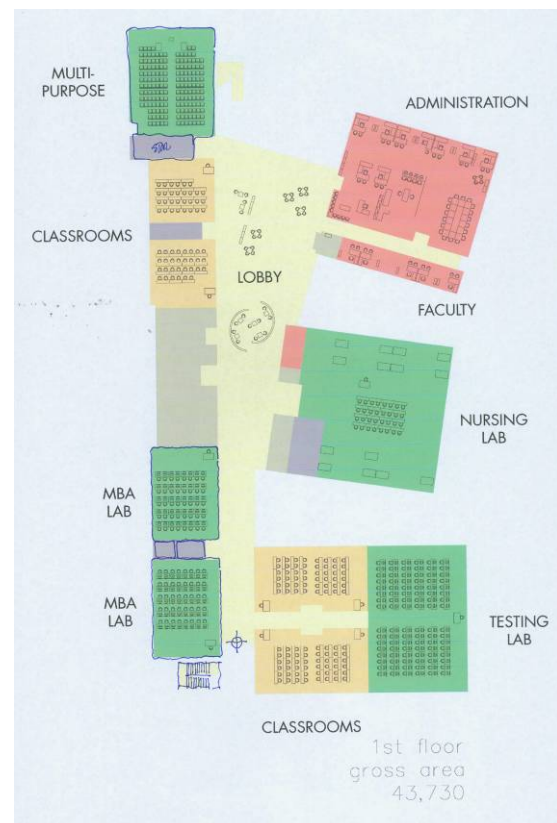
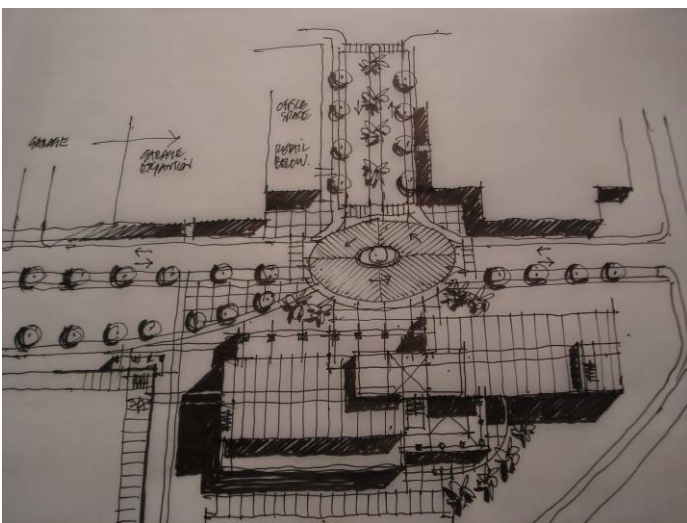
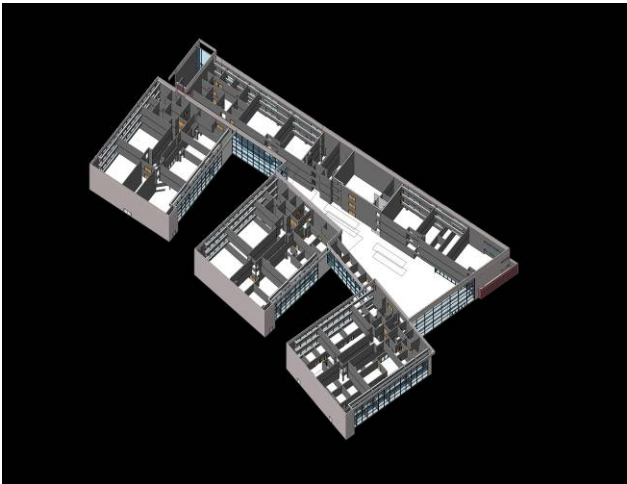
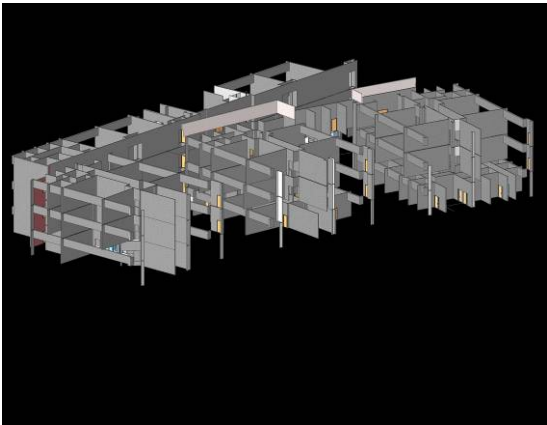


C.T. HSU + ASSOCIATES, P.A.

**THE ACADEMIC ENVIRONMENT**

**WHILE ALL OF OUR EDUCATIONAL PROJECTS ARE DESIGNED WITH COST IN MIND, WE ALWAYS TRY TO DEVELOP THE BEST SPACES FOR TEACHING AND LEARNING.**

- **OPPORTUNITIES FOR INTERACTION ARE DESIGNED AT EVERY LEVEL, WHETHER INTENDED OR ACCIDENTAL MEETING**
- **CLEAN LINES AND TRANSPARENCY ARE IMPORTANT TO CREATE THE IMAGE OF AND SETTING FOR CLEAR COMMUNICATIONS**



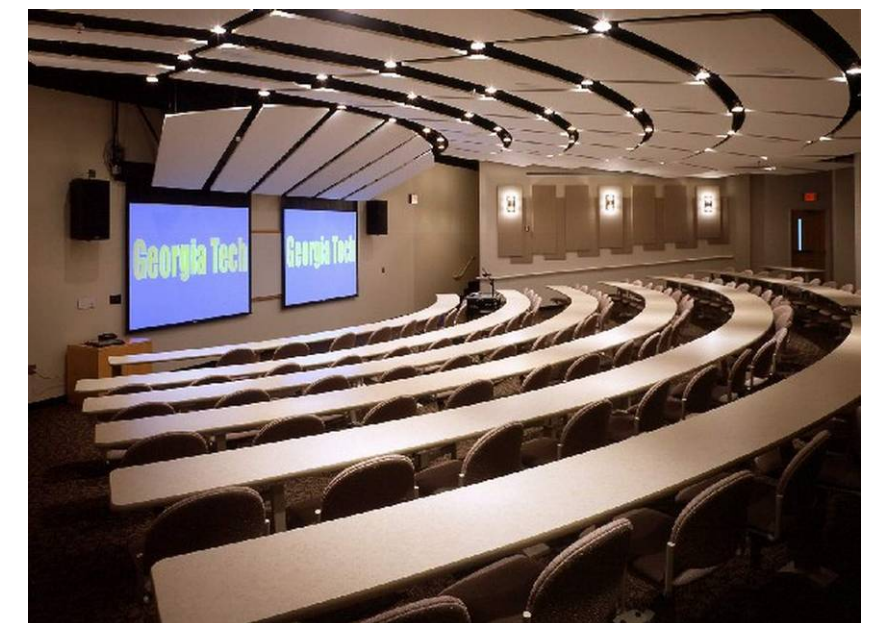
“The building will play a big role in attracting and keeping the best faculty and students.” An example of our process for design of an educational environment is found at Valencia Community College, where their new Architecture program will be housed. We begin with simple axial order, explore alternate circulation and daylighting options. Atria serve as central meeting places for a variety of class and social purposes.





C.T. HSU + ASSOCIATES, P.A.

- **THE DESIGN STUDIOS**
- **A VARIETY OF STRUCTURAL AND SPATIAL SYSTEMS WOULD TEACH STUDENTS BY ALLOWING THEM TO EXPERIENCE THE DIFFERENCES. SOME MEETING SPACES WOULD BE FOR SMALLER GROUPS**
- **EXPOSED CONCRETE, STEEL, GLASS, AND WOOD WOULD WORK IN CONCERT WITH THE VARIOUS OTHER FINISHES TO CREATE ABSORBITIVE AND REFLECTIVE ENVIRONMENTS FOR LEARNING. GLASS INTERIOR PARTITIONS ARE GREAT FOR VISUAL CONNECTIONS**
- **WE ANTICIPATE THE NEED FOR VARIETY OF ACOUSTICAL CONDITIONS (ADJUSTABLE) AND ENVISION REVERSABLE WALL PANELS, MOVEABLE PANELS, AND OTHER MEANS FOR ADJUSTING THE AMBIENCE OF A SPACE**
- **MOVEABLE LOUVERS CAN ASSIST IN ADJUSTING THERMAL COMFORT AND PRIVACY LEVELS**

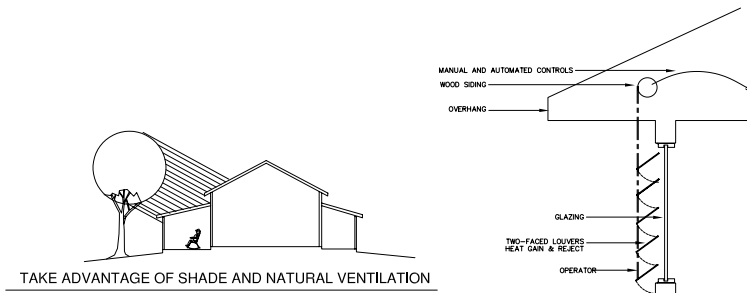


•“The studio is the focus of student learning, place for immersion in professional culture driven by experiential learning and global engagement in social issues” This leads us to believe an environment similar to an architect’s office would be an appropriate setting for some student behavior, perhaps upper class students

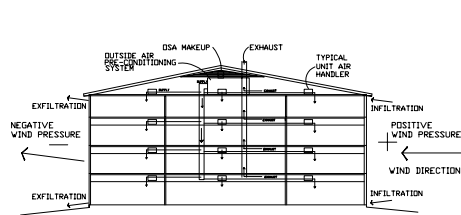




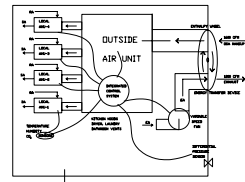
C.T. HSU + ASSOCIATES, P.A.



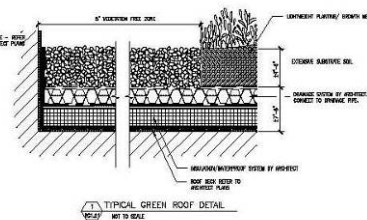
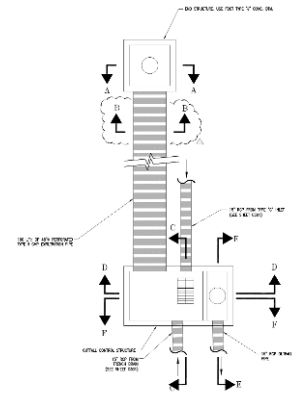
SUN AND SHADE DEVICES  
PROTECT WINDOW OPENINGS FOR SUMMER AND WINTER ENERGY MANAGEMENT, LIGHT CONTROL.



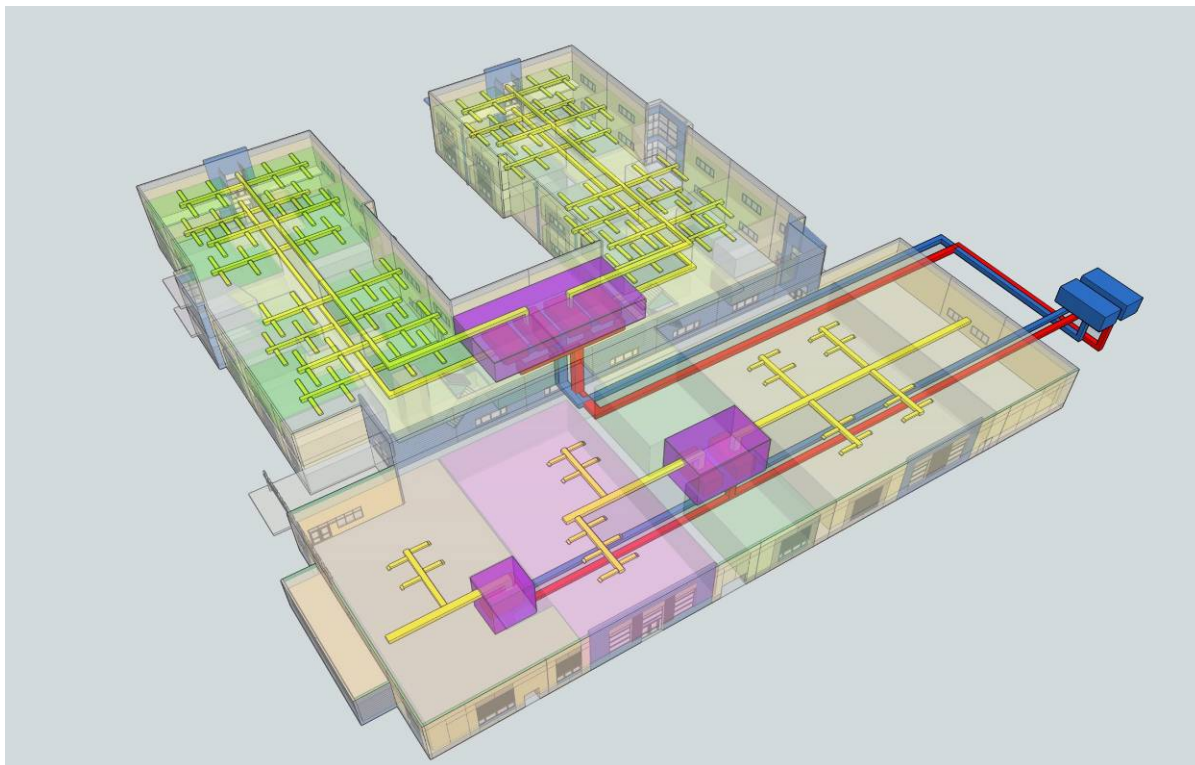
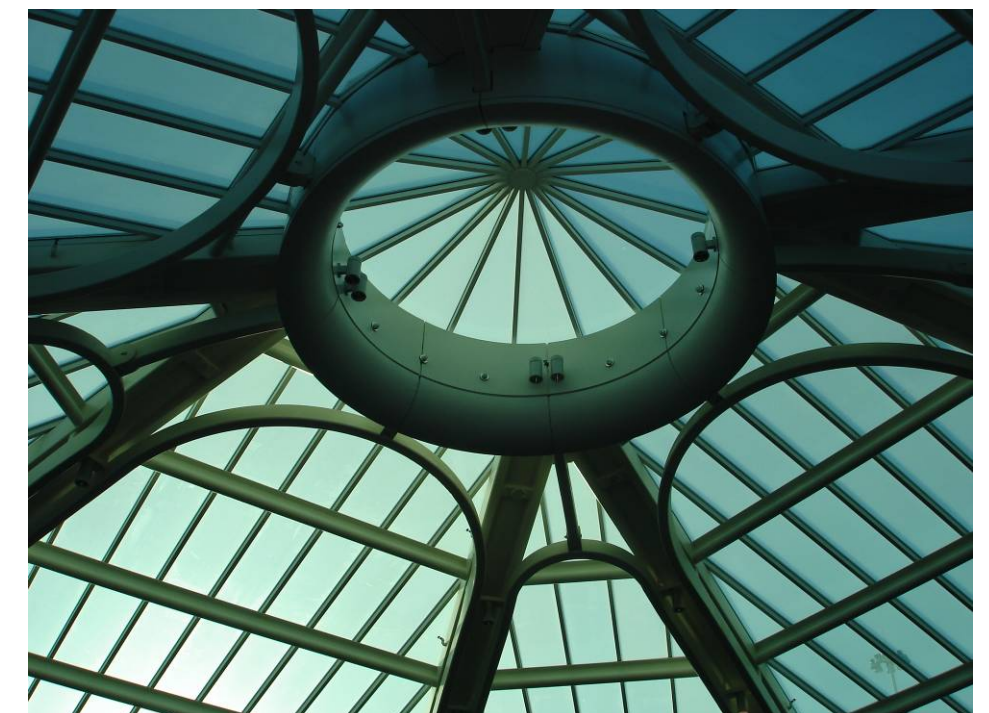
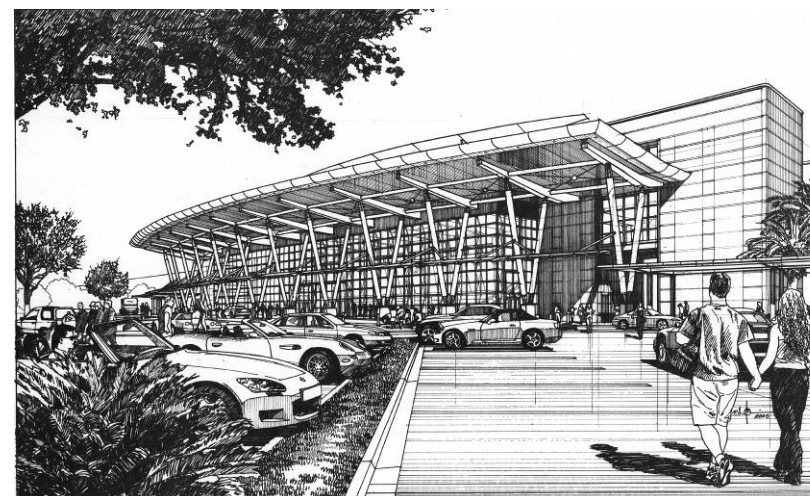
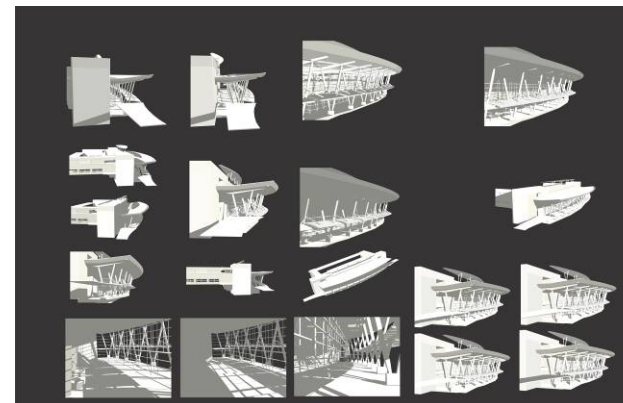
FOUR STORY BUILDING SECTION



OUTSIDE AIR HEAT WHEEL & SENSORS TO REDUCE ENERGY  
THEY CAN REDUCE WASTE ENERGY BY ADJUSTING THE OUTSIDE AIR AND PRE-HEAT OR COOL AS WELL AS DEHUMIDIFY MAKE UP AIR TO THE BUILDING AIR HANDLERS, FAN COILS, ETC.



- **THE LIVING BUILDING**
- **ALONG WITH OUR TEAM, WE CAN PROVIDE LEADERSHIP IN APPLYING TOMORROW'S TECHNOLOGY TO YOUR BUILDING TODAY.**
- **OUR EXPECTATION IS TO INCLUDE PHOTO-VOLTAIC ROOFING AND GLAZING SYSTEMS FOR GENERATION OF ELECTRICITY**
- **TAKING FULL ADVANTAGE OF SUN ANGLE, DESIGN TO ALLOW LIGHT, HEAT AND VIEWS WHEN WANTED, KEEP THEM OUT WHEN NOT WANTED**
- **DAYLIGHT AS A FACTOR IN DESIGN**
- **WATER COLLECTION, FILTRATION, ETC.**
- **CREATE HANDS-ON LEARNING LAB**
- **MONITORING, SENSING AND CONTROLLING LIGHT, SHADE, VENTILATION**
- **ADAPTABLE, FLEXIBLE LIGHT, SOUND AND VIEW CONTROLS**



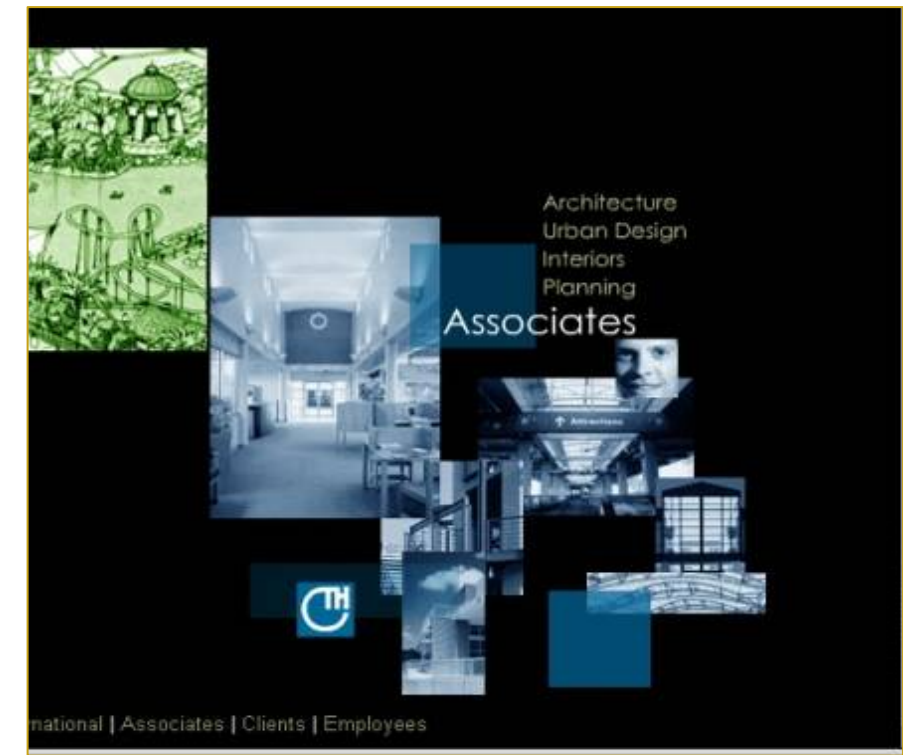
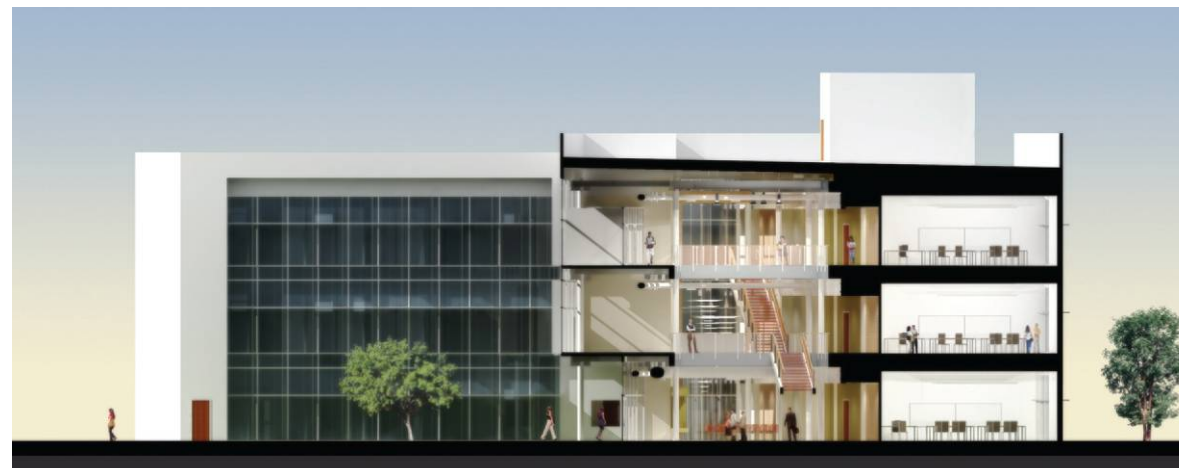
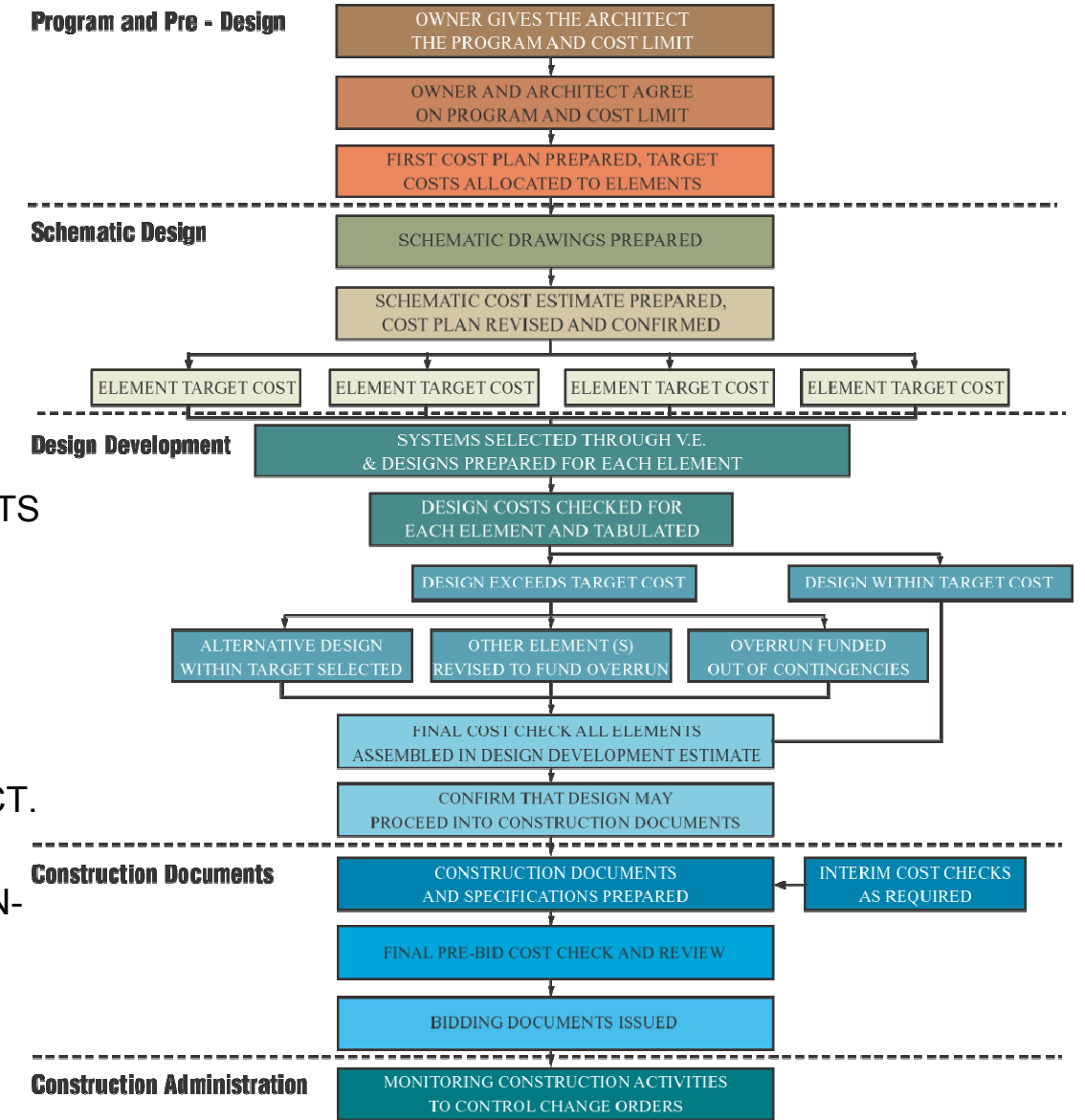




## C.T. HSU + ASSOCIATES, P.A.

### CAPABILITY AND PROCESS

- WE ARE A MEDIUM SIZED FIRM MADE UP OF HIGHLY SKILLED, EDUCATED AND MOTIVATED INDIVIDUALS.
- WE HAVE A PROVEN TRACK RECORD FOR DELIVERING PROJECTS ON TIME- AND WHICH EXCEED OUR CLIENTS EXPECTATIONS.
- WE HAVE THE ABILITY TO MANAGE DOCUMENT PRODUCTION AND CONSTRUCTION ADMINISTRATION FOR SEVERAL LARGE PROJECTS (>\$100m) AT ONE TIME- AS WELL AS UP TO 20 MEDIUM AND SMALL PROJECTS.
- OUR SUCCESSFUL EXPERIENCE IN PROJECTS LOCATED IN THE PACIFIC RIM ILLUSTRATE OUR ABILITY TO DELIVER OVERSEAS.
- WE ANTICIPATE THE USE OF OUR TIME-TESTED METHODOLOGY AS A BLUEPRINT FOR OUR COMMUNICATIONS ON THIS IMPORTANT PROJECT. WE WOULD ANTICIPATE A KICKOFF MEETING TO BECOME INTRODUCED TO THE MAJOR STAKEHOLDERS- FOLLOWED BY A SERIES OF ON-SITE AND VIDEO CONFERENCES THROUGHOUT THE PROJECT DURATION.
- WE TYPICALLY UTILIZE WEBSITE AND FTP INFORMATION FOR FILE INTERCHANGE, WITH EMAIL DISTRIBUTION OF DAILY CORRESPONDENCE. 6:30 PM HERE WOULD BE A GOOD TIME TO TALK WITH YOU BY PHONE AS YOU START YOUR DAY.
- WE HAVE POTENTIALLY TEAMED UP WITH WALTER P. MOORE AND NEWCONB AND BOYD, IN THE US. WE ALSO CONTEMPLATE A COLLABORATION WITH SOME AUSTRALIAN CONSULTANTS, BUT HAVE NOT FINALISED ANY SUCH ARRANGEMENTS
- Please contact Dr. Sandy Shugart, the President of Valencia Community College at : PO Box 3028, Orlando, Florida, 32802-3028, United States of America







C.T. HSU + ASSOCIATES, P.A.

**MERIT**

**American Institute of Architects, Florida**

Award for Excellence in Architecture. Universal Studios Florida Transportation Center. 1999.  
Award for Excellence in Architecture. Seminole County Softball Complex. 1998.  
Un-built Design Award. Suzhou Performing Arts Center and Exhibition Hall. 1998.

**American Institute of Architects, Orlando**

Honorable Mention in Design. Valencia Community College Criminal Justice Institute. 2006.  
Honor Award for Design Excellence. Orange County Convention Center West Entrance. 2004.  
Honor Award for Design Excellence. Boone High School Administration Center and Classroom Building. 2004.  
Design Award. Edgewater High School. 1998.  
Unbuilt Design Award. Universal Studios Florida Transportation Center. 1996.  
Merit Award. Seminole County Softball Complex. 1994.

**International Awards**

International Parking Award of Merit. Universal Studios Transportation Center. 2000.  
Design Competition Winner. Al Shallal Project, Jeddah, Saudi Arabia. 1998.  
Design Competition Winner. Suzhou Performing Arts Center and Exhibition Hall, China. 1997.

**Government Honors**

Medal of Ecology. City of Paulinia, Brazil. 1996.  
International Advisor. China Association of Amusement Parks and Attractions. 1995.  
Majority Service Company Award. U. S. Minority Business Development Administration. 1988.

See us on our website at: [www\cthsu.com](http://www.cthsu.com)

